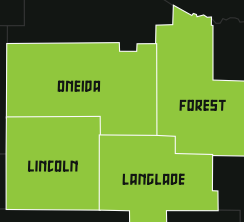


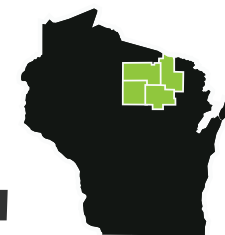
Please ride responsibly and follow all local and state rules and regulations.

Northern Wisconsin is home to outstanding ATV/UTV trails—explore hundreds of miles of Northwoods routes in Forest, Langlade, Lincoln, and Oneida counties.

Enjoy your ride!



Discover great ATVing and UTVing in northern Wisconsin



Forest County, Langlade County, Lincoln County and Oneida County in the Northwoods of Wisconsin are home to some of the state's best ATV and UTV trails, offering hundreds of miles of fun and scenic riding. This guide and map will help you plan your getaway—learn more about local ATV clubs and state ATV/UTV regulations and use the trail map to find ATV/UTV routes across northern Wisconsin.

Enjoy your ride in the Northwoods!

ATV/UTV Pre-Ride Checklist

Having fun on the trails and staying safe go hand in hand.

Plan...

Plan your ride and research the area and weather conditions before you head out.

Plan for comfort by wearing long sleeves and pants, gloves and weather-appropriate clothing.

Wear...

Wear a DOT-certified helmet, goggles or visor.

Wear weather-appropriate clothing and plan for unexpected weather changes.

Always...

Always inspect your machine before your ride to make sure you're safe and legal.

Always ride with someone else.

Know...

Know your machine's limits and follow all state laws.

Know where you're riding and use a map, handheld GPS or smartphone.

Slow down...

Slow down when the trail bends—and don't cut corners!

Slow down at night and ride no faster than your lights safely allow.

Never...

Never drink or use any drugs that might impair your ability to ride safely.

Never hit the trail without telling someone back at homebase your trip details.

Follow these guidelines every time you ride. Make them a habit. They will keep you safe and on the trail for many years to come.

Now get out there and ride!

Northwoods ATV/UTV Clubs

FOREST COUNTY

- FOREST COUNTY ATV ASSOCIATION

LANGLADE COUNTY

- ANTIGO AREA ATV/UTV CLUB
- PARRISH HIGHLANDERS ATV CLUB
- WHITE LAKE ATV CLUB
- WOLF RIVER RIDERS ATV CLUB

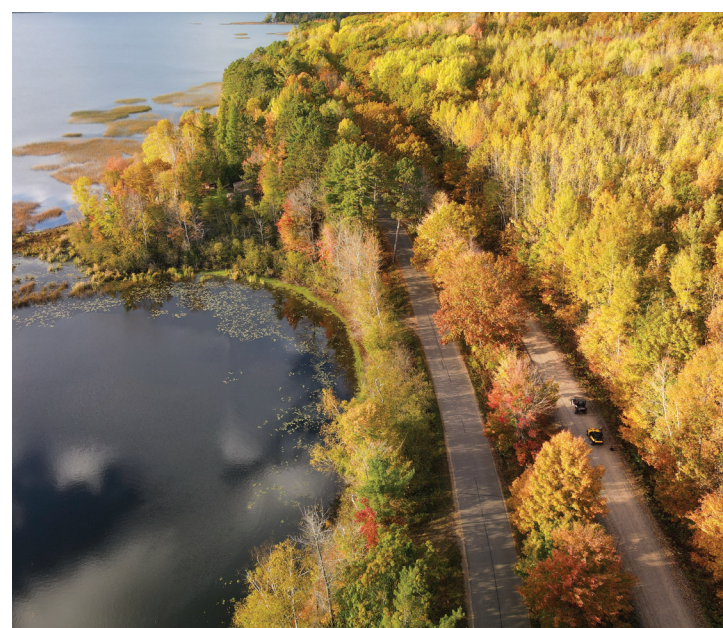
LINCOLN COUNTY

- HARRISON HILLS ATV CLUB
- SOMO AREA ATV CLUB/TOMAHAWK TRAIL SEEKERS ATV CLUB
- SPIRIT VALLEY RIDERS ATV CLUB

ONEIDA COUNTY

- HODAG & WHEELERS ATV/UTV CLUB
- LAKELAND ATV/UTV CLUB
- LAKE TOMAHAWK ATV/UTV CLUB
- LITTLE RICE ATV CLUB
- NOKOMIS ATV CLUB
- PEL-CHO MUDD NUTZ ATV/UTV CLUB
- SUGAR CAMP ATV CLUB
- THREE LAKES NICOLET ATV CLUB

Find more information at northwoodsatu-utu.com/clubs



FOREST COUNTY

Forest County—located on the border of northern Wisconsin and Michigan's Upper Peninsula—is a great place for outdoor recreation, including ATV and UTV trails that traverse beautiful Northwoods scenery. Plan Your ATVing or UTVing trip to Forest County today!

ATV/UTV TRAILS AND ROUTES

- FOREST COUNTY PUBLIC ATV TRAIL
- FOREST COUNTY ROUTES
- FOREST COUNTY WINTER ATV/UTV TRAILS
- NICOLET STATE TRAIL
- VALLEY TRAIL
- WOLF RIVER STATE TRAIL

Find more information at northwoodsatu-utu.com/counties/forest-county



LANGLADE COUNTY

Come to Antigo and Langlade County in Wisconsin's Northwoods to find four seasons of outdoor fun, from the wild Wolf River to miles and miles of scenic ATV and UTV trails. Whether you're launching your outdoor adventure in Antigo or exploring some of the area's small towns, Langlade County is waiting for you.

ATV/UTV TRAILS AND ROUTES

- AUGUSTYN SPRINGS TRAIL
- LANGLADE COUNTY ROUTES
- PARRISH HIGHLAND TRAIL
- PICKEREL/PEARSON ATV TRAIL
- WHITE LAKE TRAIL
- WOLF RIVER STATE TRAIL

Find more information at northwoodsatu-utu.com/counties/langlade-county



LINCOLN COUNTY

Head to the doorway to Wisconsin's Northwoods in Lincoln County, home to beautiful Northwoods scenery and abundant outdoor recreation, including nearly 50 miles of ATV/UTV trails.

ATV/UTV TRAILS AND ROUTES

- HARRISON HILLS ATV TRAIL
- LINCOLN COUNTY ROUTES

Find more information at northwoodsatu-utu.com/counties/lincoln-county



ONEIDA COUNTY

Oneida County is the perfect destination for your next ATV/UTV getaway to northern Wisconsin, offering outstanding trail systems, great places to stay (including a dedicated ATV/UTV campground) and more.

ATV/UTV TRAILS AND ROUTES

- ENTERPRISE ATV TRAIL
- LITTLE RICE ATV TRAIL
- ONEIDA COUNTY ROUTES

Find more information at northwoodsatu-utu.com/counties/oneida-county

ATV/UTV Trail Descriptions

*Coordinates for trail parking areas

FOREST COUNTY

FOREST COUNTY PUBLIC ATV TRAIL

The Forest County Public All-Terrain Vehicle (ATV) Trail is entirely on land owned by Forest County and is open for year-round use.

FOREST COUNTY ROUTES

Most Forest County townships allow ATV use on their roads (gravel and paved) as well as all County Roads. When combined, there are hundreds of miles of fun, challenging, and well-maintained trails in the county.

FOREST COUNTY WINTER ATV/UTV TRAILS

Forest County's winter ATV trails consist of the Nicolet State Trail, the Wolf River State Trail, and the Valley Trail.

LANGLADE COUNTY ROUTES

Langlade County designated ATV/UTV routes.

PARRISH HIGHLAND TRAIL

The Parish Highland Trail passes through 50 miles of scenic terrain in northwestern Langlade County and connects to trails in Lincoln and Oneida counties.

PICKEREL/PEARSON ATV TRAIL

This 5-mile trail connects the Parish Highland Trail, the Augustyn Springs Trail, and the Forest County ATV Trail System.

WHITE LAKE TRAIL

A 20-mile trail in southeastern Langlade County passes through downtown White Lake and Crandon west to May's Bar.

VALLEY TRAIL

This Forest County trail runs for 7 miles from Crandon west to May's Bar.

WOLF RIVER STATE TRAIL

ATVs and UTVs can ride on sections of this 33-mile state trail, which follows a former rail corridor through Forest and Langlade counties.

WOLF RIVER STATE TRAIL

ATVs and UTVs can ride on sections of this 33-mile state trail, which follows a former rail corridor through Forest and Langlade counties.

ONEIDA COUNTY ROUTES

Oneida County designated ATV/UTV routes.

LINCOLN COUNTY



HARRISON HILLS ATV TRAIL

The Harrison Hills trail system spans roughly 50 miles through the hills and woods of Lincoln County, connecting with trails in Langlade and Oneida counties.

LANGLADE COUNTY ROUTES

Langlade County designated ATV/UTV routes.

PARRISH HIGHLAND TRAIL

The Parish Highland Trail passes through 50 miles of scenic terrain in northwestern Langlade County and connects to trails in Lincoln and Oneida counties.

PICKEREL/PEARSON ATV TRAIL

This 5-mile trail connects the Parish Highland Trail, the Augustyn Springs Trail, and the Forest County ATV Trail System.

WHITE LAKE TRAIL

A 20-mile trail in southeastern Langlade County passes through downtown White Lake and Crandon west to May's Bar.

VALLEY TRAIL

This Forest County trail runs for 7 miles from Crandon west to May's Bar.

WOLF RIVER STATE TRAIL

ATVs and UTVs can ride on sections of this 33-mile state trail, which follows a former rail corridor through Forest and Langlade counties.

ONEIDA COUNTY ROUTES

Oneida County designated ATV/UTV routes.

